

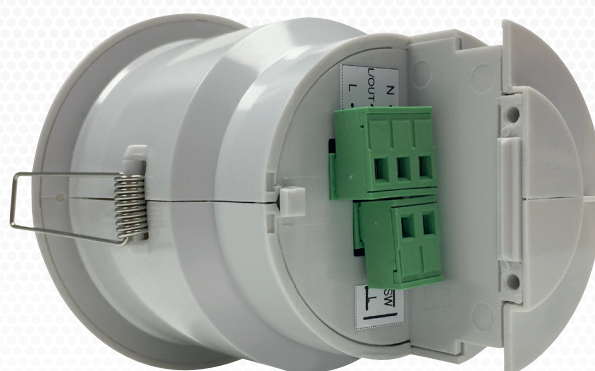
PRE3201B-AH-PRM

Instructions - **page 1** of 6

PRM switching, adjustable head, ceiling PIR presence/absence detector



Cleverly simple
control of energy.

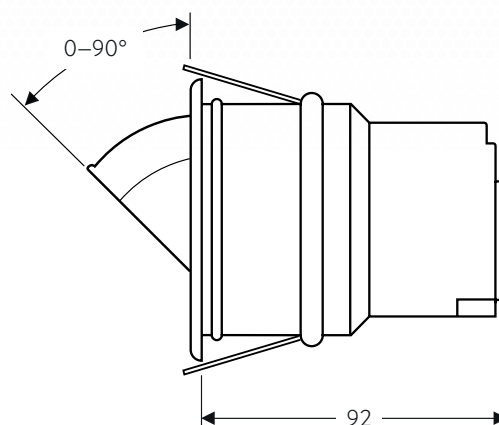
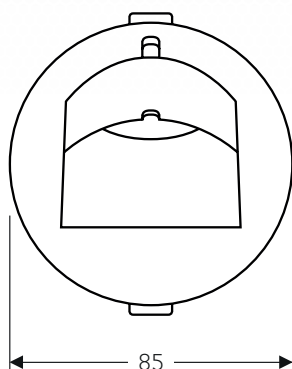


Warning

This device should be installed by a qualified electrician in accordance with the latest edition of the IEE wiring regulations.

DIMENSIONS

74mm cut out



Due to our policy of continuous improvement, we reserve the right to change specifications without notice. All information was correct at time of when this product file was produced - February 2022

PRE3201B-AH-PRM

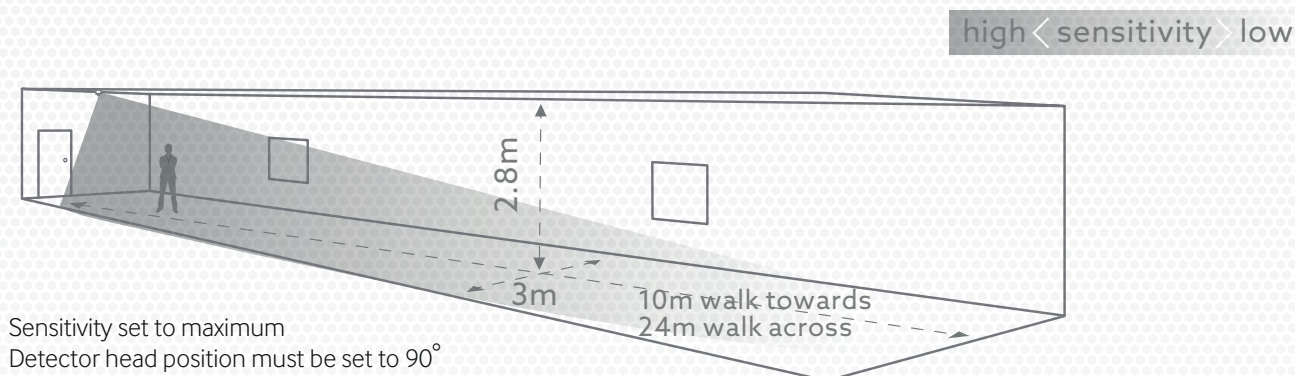
Instructions - page 2 of 6

PRM switching, adjustable head, ceiling PIR presence/absence detector



Cleverly simple
control of energy.

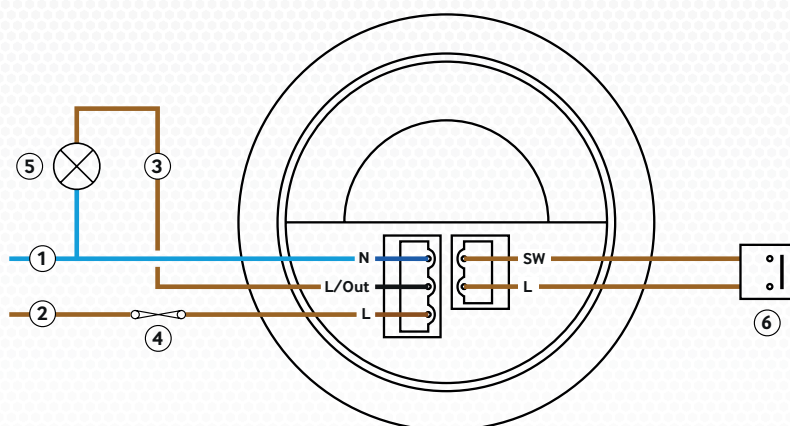
DETECTION PATTERN



WIRING

Key

1. Neutral
2. Live
3. Switched output
4. 10A circuit protection if required
5. Load
6. Momentary push-to-make switch, 230V (for absence detection)
Switching channel is L-Out



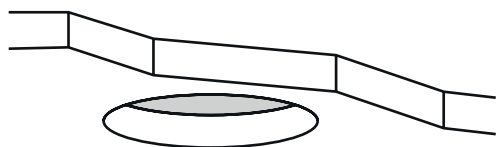
INSTALLATION

This device is designed to be flush ceiling-mounted.

- Do not site the unit where direct sunlight & artificial light might enter the sensor.
- Do not site the sensor within 1m of any forced air heating or ventilation.
- Do not fix the sensor to an unstable or vibrating surface.
- Occupancy is best detected when the ambient temperature is different to that of the human body, thus, use within - 20 to 35°C ambient temperature.

1

Ø 74mm



Due to our policy of continuous improvement, we reserve the right to change specifications without notice.
All information was correct at time of when this product file was produced - February 2022

PRE3201B-AH-PRM

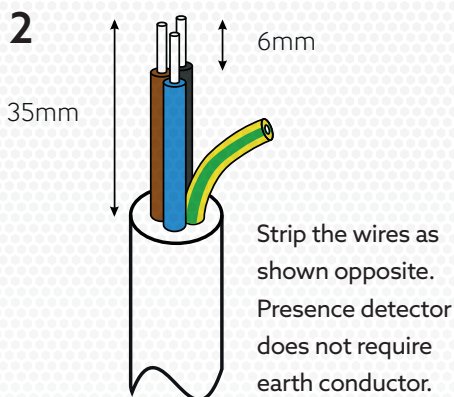
Instructions - **page 3** of 6

PRM switching, adjustable head, ceiling PIR presence/absence detector

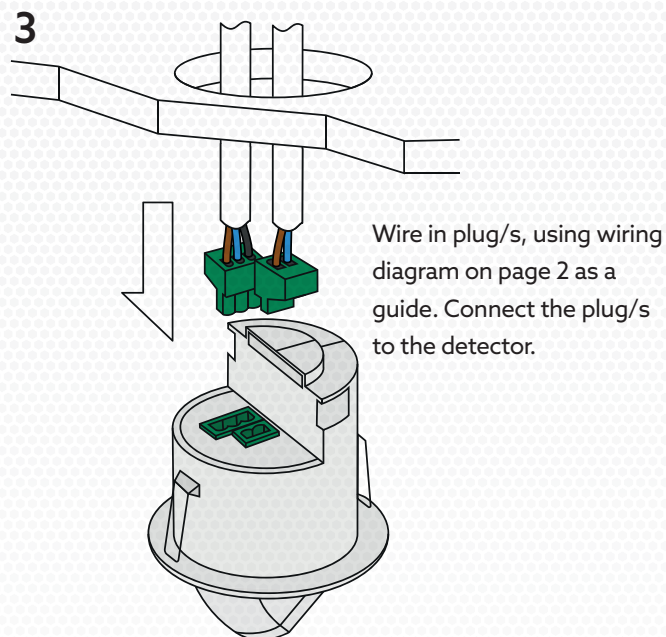


Cleverly simple
control of energy.

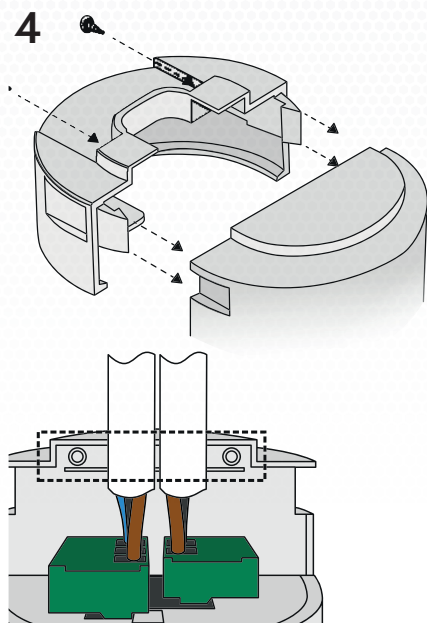
WIRE STRIPPING



WIRE IN PLUGS AND CONNECT TO DETECTOR



CLAMP CABLE

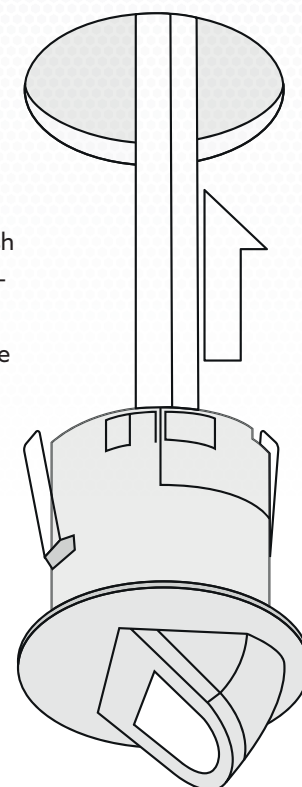


INSTALL DETECTOR

- 5** Bend the springs up and push detector through hole in ceiling. When fully inserted the springs snap back to hold the device in place.



To avoid injury, take care when bending springs.



Due to our policy of continuous improvement, we reserve the right to change specifications without notice. All information was correct at time of when this product file was produced - February 2022

PRE3201B-AH-PRM

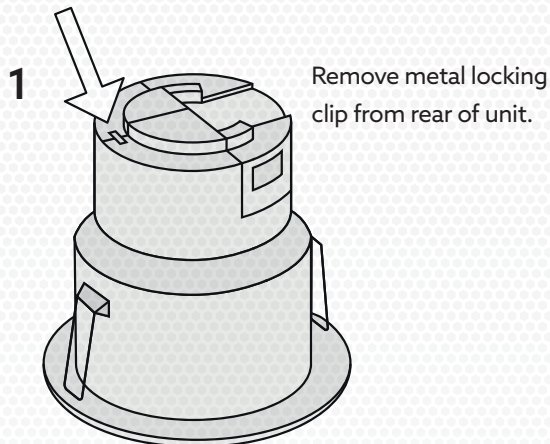
Instructions - **page 4** of 6

PRM switching, adjustable head, ceiling PIR presence/absence detector

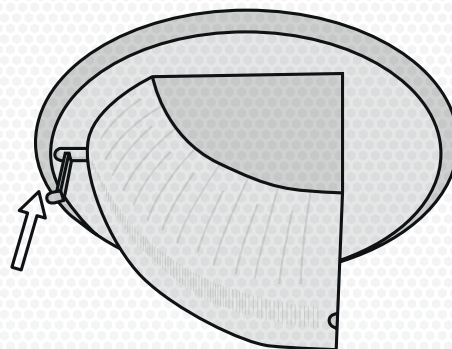


Cleverly simple
control of energy.

HEAD POSITIONING AND LOCKING



2

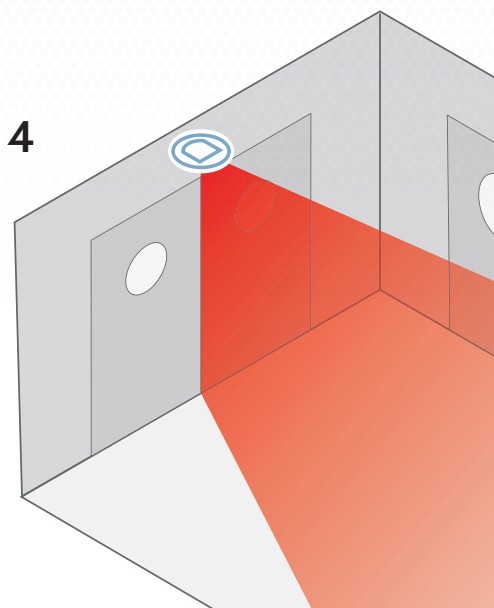
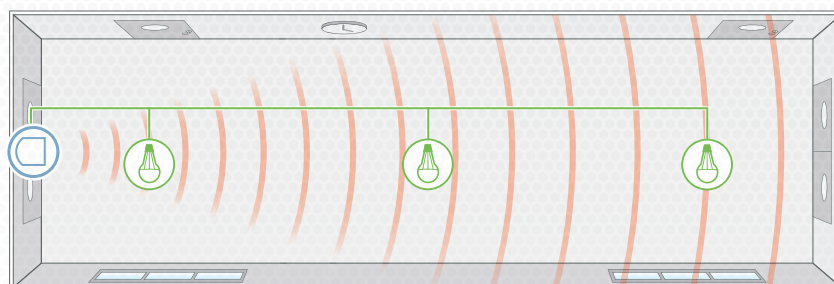


Set sensor head position to 90° for maximum detection range.
Push clip into position shown in the adjacent diagram to lock head. To remove clip, lever out with a small screwdriver.



Sensor head position < 90deg may result in
varying detection range & sensitivity.

3 Mount the detector centrally above the doorways for optimum detection as shown in the image.



Mount the detector as close to the doorway as possible for precise movement detection and high sensitivity.

DEFAULT SETTINGS

Time out: 20 minutes.L

UX on level: 999

LUX off level: 999

Sensitivity on: 9

Sensitivity off: 9

Detection: Presence

Adjustments can be made using the optional PRE5901 OR PRE5903 handsets.

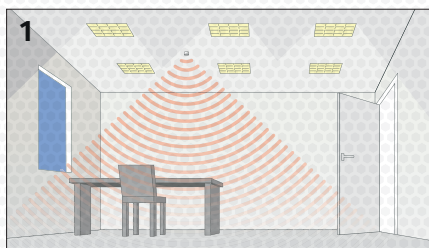
Due to our policy of continuous improvement, we reserve the right to change specifications without notice.
All information was correct at time of when this product file was produced - February 2022



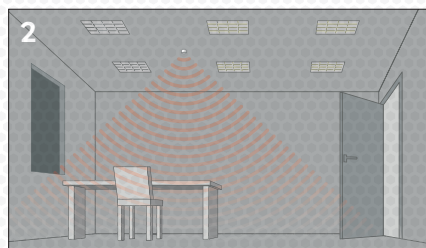
Cleverly simple
control of energy.

TESTING

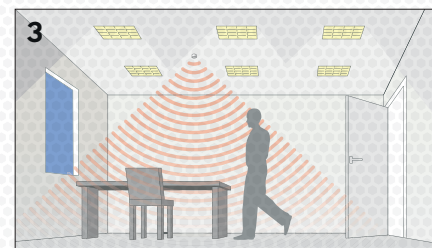
PRESENCE DETECTION



1. Power up the sensor. The load should come on immediately.



2. Vacate the room or remain very still and wait for the load to switch off (this should take fewer than 20 minutes).



3. Enter the room or make some movement and check that the load switches on.

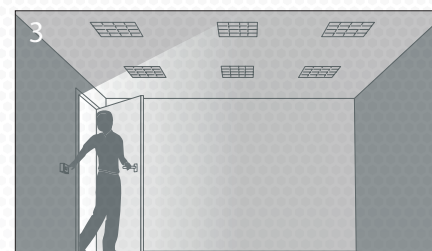
ABSENCE DETECTION



1. Power up the sensor. Switch the load on.



2. Vacate the room and wait for the load to switch off (this should take fewer than 20 minutes).



3. Enter the room, the load will remain off until you switch it on again.

PRE3201B-AH-PRM

Instructions - **page 6** of 6

PRM switching, adjustable head, ceiling PIR presence/absence detector



Cleverly simple
control of energy.

TECHNICAL DATA

Weight	0.15 KG
Supply Voltage	230VAC +/- 10%
Circuit Protection	<+10A MCB Type B
Supply Frequency	50Hz
Power consumption	
Parasitic	840mW
Terminal Capacity	2.5mm ²
Maximum Load	
Incandescent lighting	10A
Fluorescent lighting	10A
Compact Fluorescent lighting	10A
LED lighting	10A
Resistive heaters	10A
Fans and ventilation equipment	10A
Load Inrush rating	200A for 300μS
Light detection range	Usable 15-950 Lux
Time out range	10s -99m
Rated impulse voltage	2500V
Operating temperature	-20 to +35°C
Humidity	5 to 95% non-condensing
Material (casing)	Flame retardent ABS and PC/ABS
Insulation class	2
IP rating	40
Compliance	EMC-2014/30/EU. LVD-2014/35/EU

ACCESSORIES

Part number	Description
PRE5901	Infra-red programming handset
PRE5903	Compact infra-red programming handset



IMPORTANT NOTICE

This device should be installed by a qualified electrician in accordance with the latest edition of the IEE Wiring Regulations and any applicable Building Regulations.

Due to our policy of continuous improvement, we reserve the right to change specifications without notice.
All information was correct at time of when this product file was produced - February 2022

Prefect Controls Limited, Unit 2, Church Field Business Park, Church Field Road, Sudbury CO10 2YF
01787 320604 | mail@prefectcontrols.com | prefectcontrols.com

10494